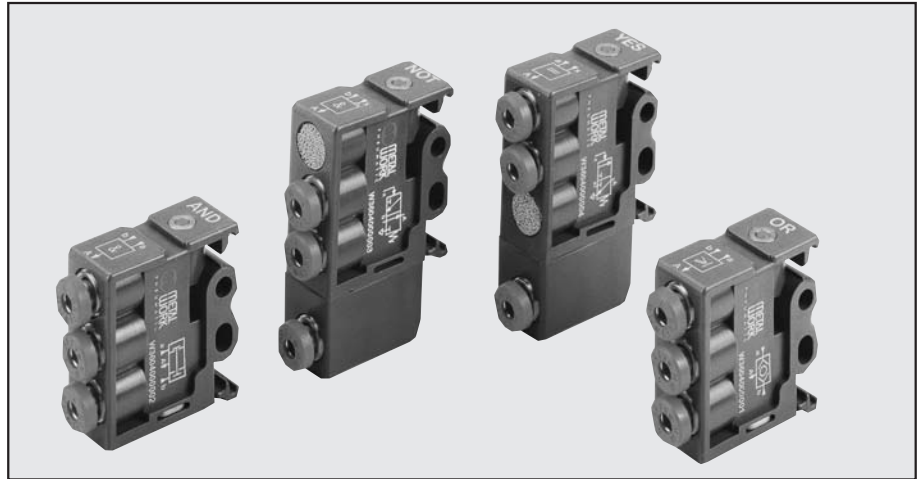


PNEUMATIC LOGIC

Metal Work logic elements are available with 5 different functions: OR, AND, NOT, YES, MEMORY.

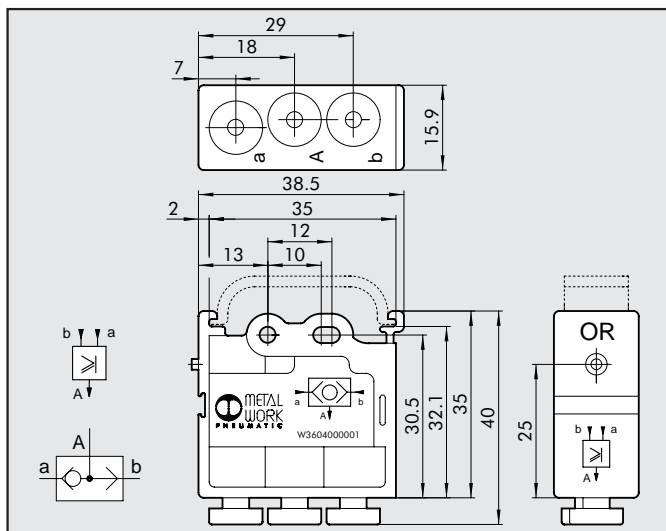
Main features common to all elements:

- Adaptor for Ω bar (DIN EN 50022) integral with the body.
- Built-in pressure indicator.
- Pipe locking system using $\varnothing 4$ built-in fittings.



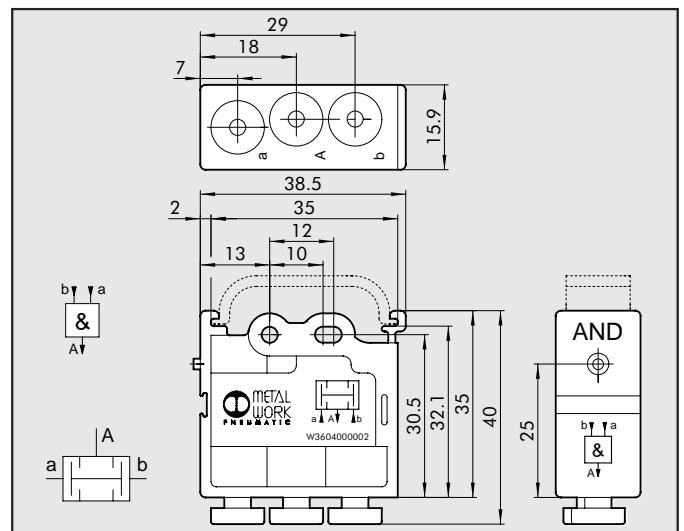
TECHNICAL DATA	AND - OR - YES - NOT - MEMORY
Operating temperature	-10 ÷ +60°C (14° ÷ 140°F)
Valve fitting	Push-in fitting for $\varnothing 4$ pipe
Pressure range	OR - AND: from 1.5 to 8 bar YES-NOT -MEMORY: from 0 to 8 bar, pilot pressure from 1.5 to 8 bar NOT: 6 bar switching threshold = 0.4
Nominal diameter	2.7 mm
Flow rate at 6 bar (0.6 MPa ÷ 87 psi)	100 NI/min
ΔP 1 bar (0.1 Mpa ÷ 14.5 psi)	
Fluid	Lubricated or unlubricated filtered compressed air; must be uninterrupted when lubricated
Recommended lubricant	ISO e UNI FD22
Actionament	Via compressed air
Reset	AND-OR: via compressed air/YES-NOT via mechanical spring MEMORY: via compressed air.
Installation	In any position
Mounted	On Omega bar (DIN EN 50022) size 35x7 or 35x15 Wall-mounted with $\varnothing 4.2$ holes
Body	Technopolymer
Spool	Aluminium
Seal	NBR (FKM/FPM on request)

LOGIC ELEMENT: OR



Code: W3604000001
Description: OR - LOGIC PRODUCT

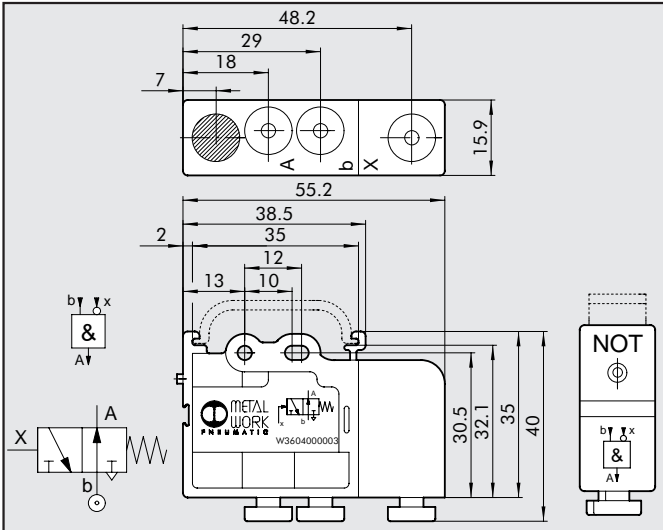
LOGIC ELEMENT: AND



Code: W3604000002
Description: AND - LOGIC SUM

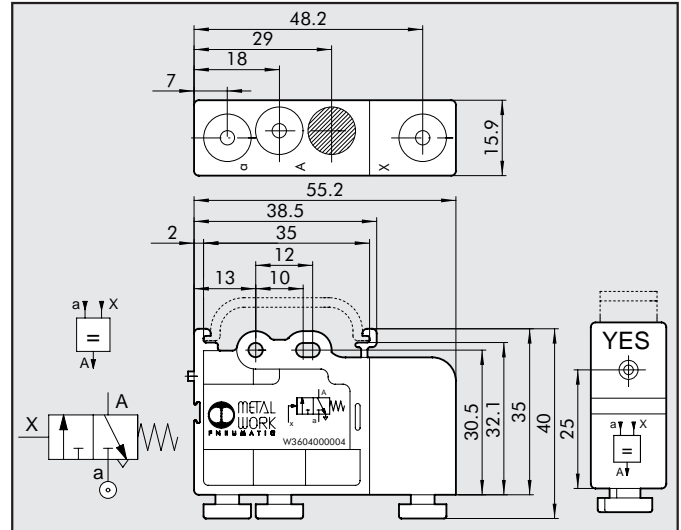


LOGIC ELEMENT: NOT



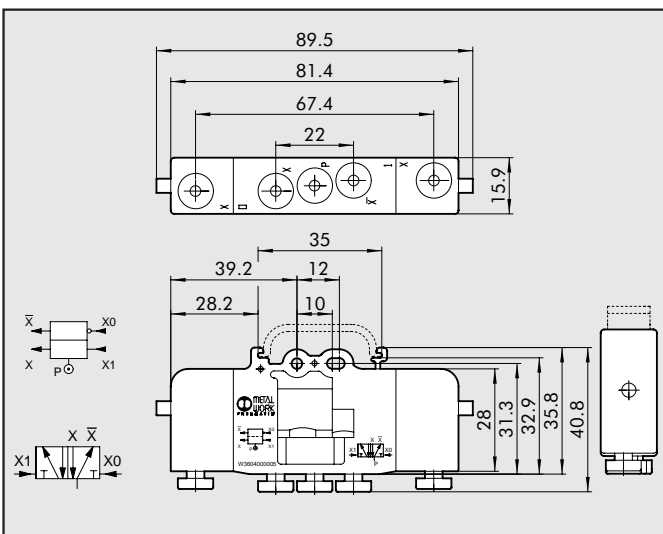
Code	Description
W3604000003	NOT - NEGATION

LOGIC ELEMENT: YES



Code	Description
W3604000004	YES - AFFIRMATION

LOGIC ELEMENT: MEMORY



Code	Description
W3604000005	MEMORY

NOTES

NOTES